

# **Lake Wallkill**

## **Aquatic Supervision Plan**

(This document is a requirement for all operators of public beaches/swimming facilities in the state of NJ. The Vernon Board of Health is responsible for insuring the state regulations are followed including the documented aspects of this plan. The Vernon Board of Health typically conducts Two inspections at Lake Wallkill each season)

# **Aquatic Supervision Plan**

## **Lake Wallkill**

Lake Wallkill has 275 feet of beach front. The swimming area for Lake Wallkill is defined by a series of ropes and buoys that run from the left side of the beach to the far side of the diving towers as noted in the attached diagram.

During bather load of up to 60 bathers, (usually Monday – Thursday), 3 guards will rotate between Beach Chair “A”, the Diving Tower Chair and break. During peak bather load (typically weekends, above 60) 4 guards will rotate between Beach chairs “A & B”, the Diving Tower Chair and break.

A lifeguard sits in their assigned chair and supervises the area indicated on the attached diagram. The Beach Guard (s) supervise the beach area as well as the area extending out to the raft (from the beach) and the side of the raft not visible from the Diving Tower Chair. The Diving Tower Guard supervises the diving platform area and swim lanes as well as the area extending out to the raft (from the Diving Towers).

In the event there are not sufficient guards to meet the requirements above (max 60 bather load), the Diving Tower Area will be closed and available guards will supervise the Beach area. In the event the number of bathers exceeds 60 for any one guard position, the guard will instruct a suitable number of bathers to remain out of the water until the maximum of 60 is reached.

The number of daily bathers shall be recorded in the log contained in this plan.

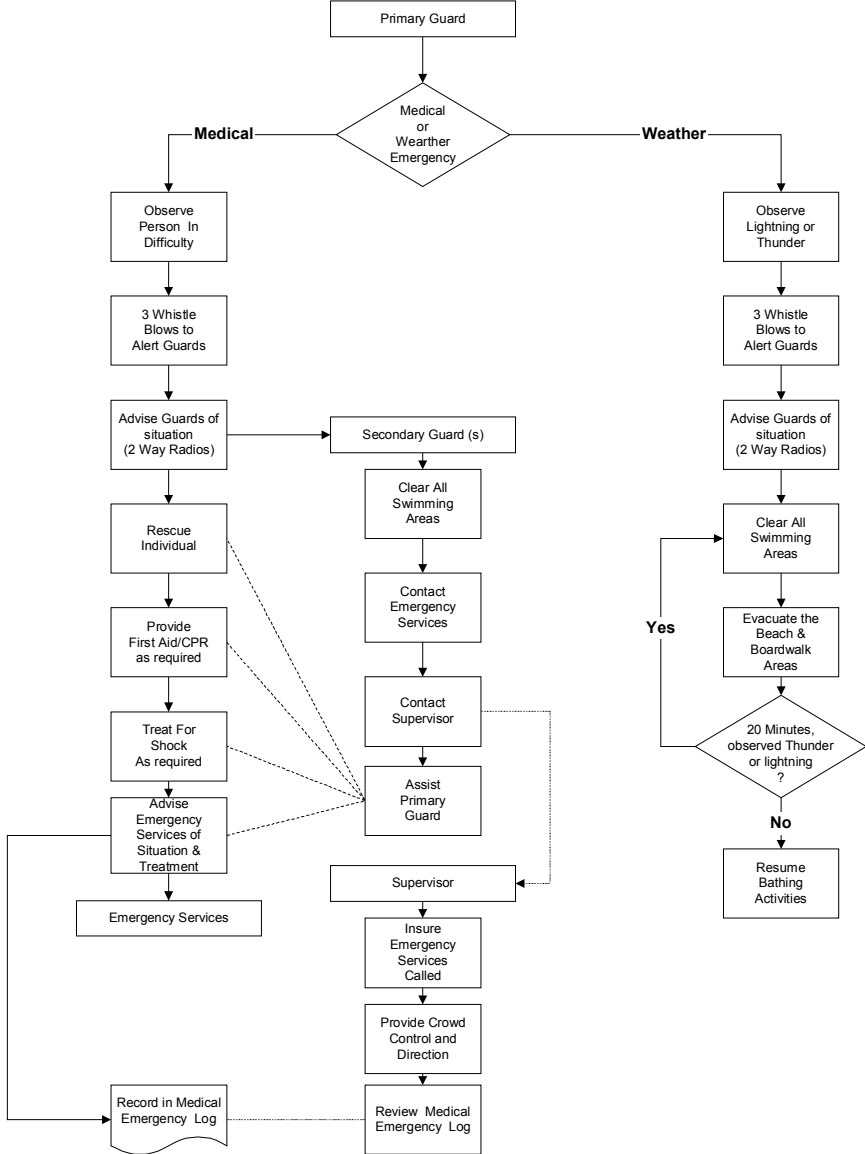
### **Rules & Regulations –**

The Rules & Regulations to be enforced by the lifeguards can be found (posted) on the back of the lifeguard stands.

### **Hours of Operation**

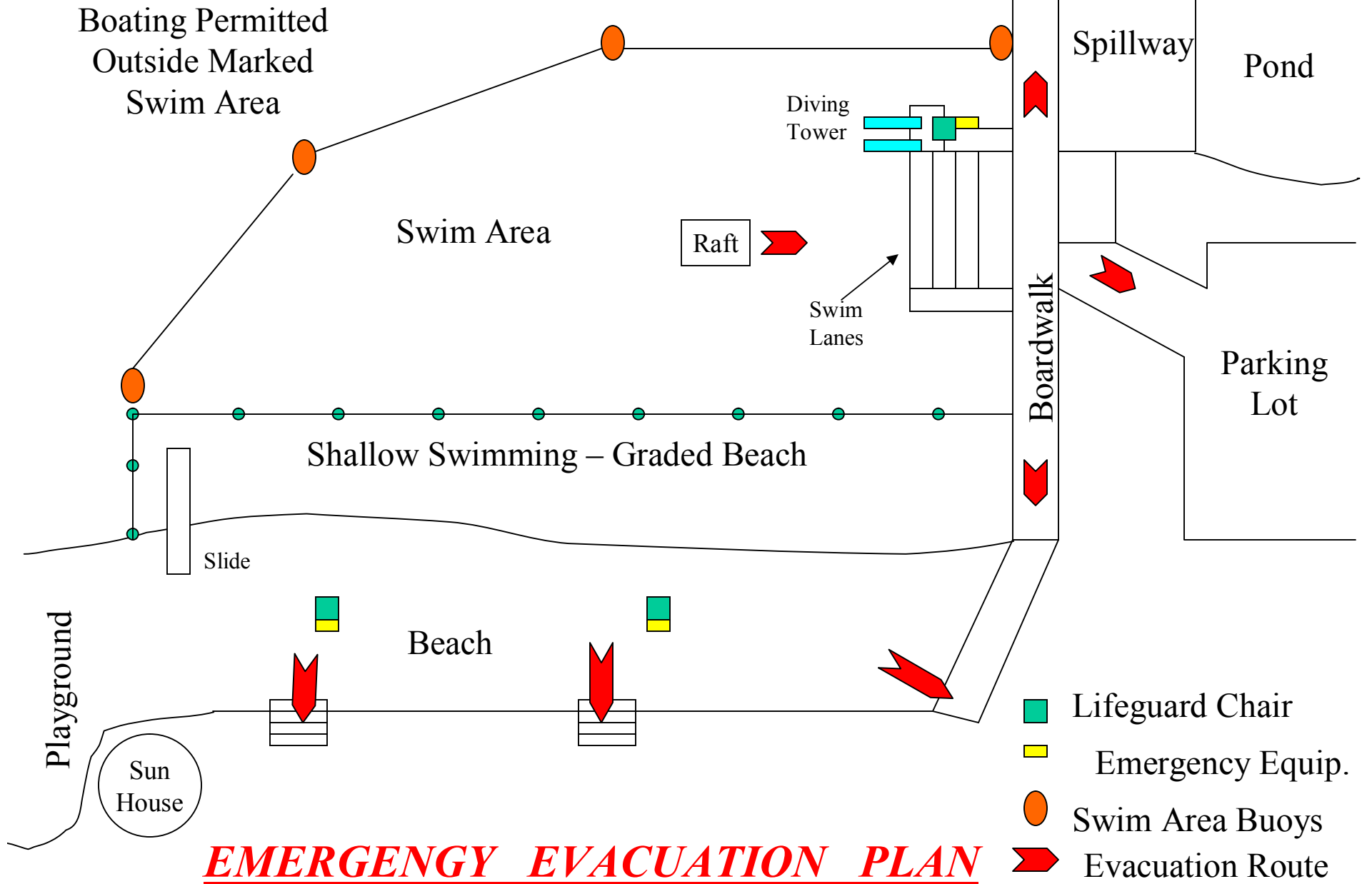
The hours of operation can be found in the Lifeguard Schedule section of the Aquatic Supervision plan. Facility opening and closing tasks can be found in the Lifeguard Job Description (Description of Duties) contained in this manual.

# Emergency Flow Diagram

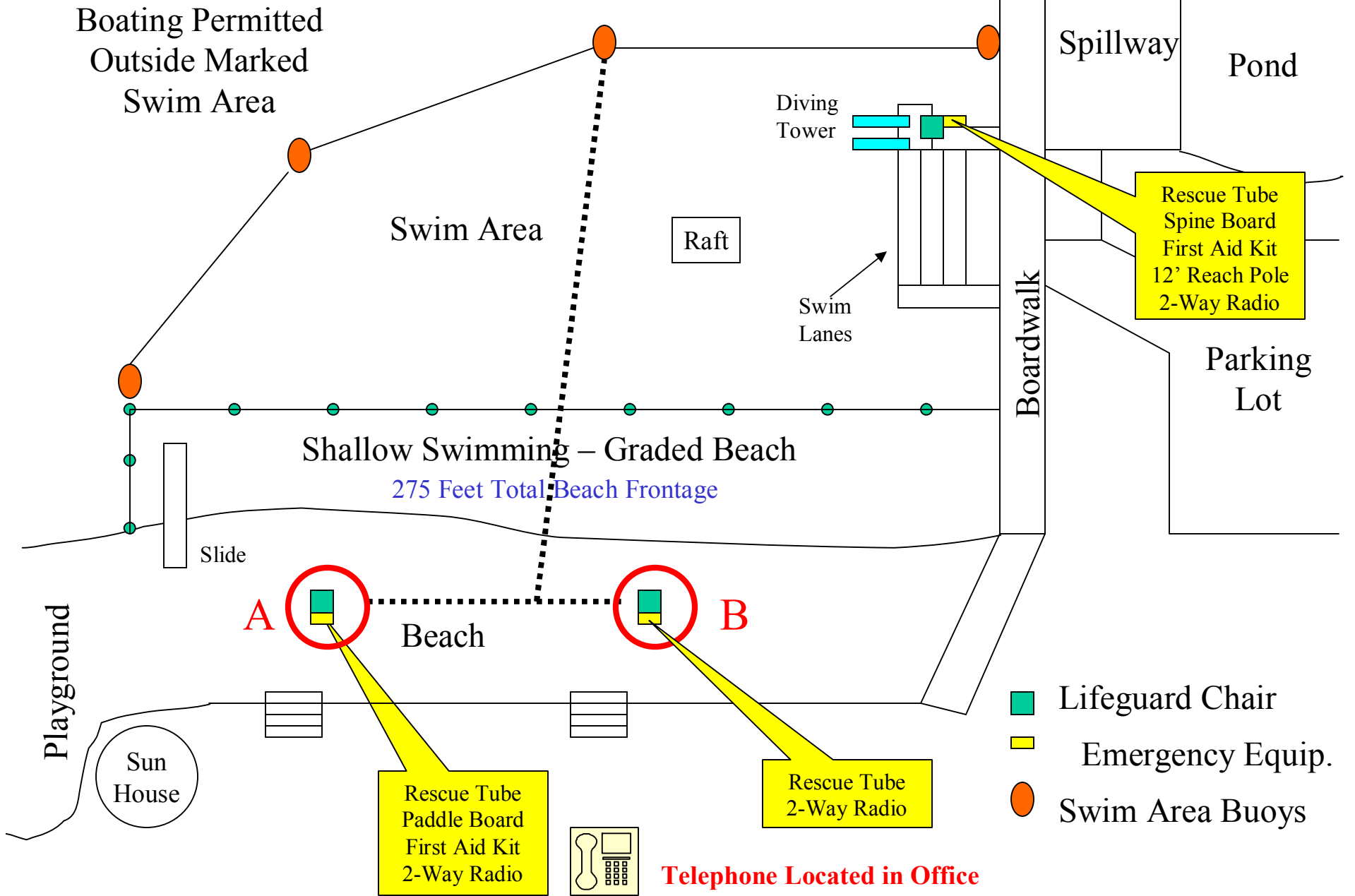


Team Reviews Emergency Procedures for any problems/issues, implement corrections for future events.

# Diagram of Lake Walkkill



# Lifeguard Coverage/Equipment Plan



# Medical Emergency Log

- The log is located as follows:
  - During hours of operation, the log is located at the beach lifeguard station
  - During off hours, the log is stored in the lifeguard room in the office

# Supervision & Emergency Contact List

		Mobile	Home
Supervisor:			
Brendan Jaeger	Lake Manager	973-919-5582	973-875-7320
Administrative:			
Mary Ernst	Lake Admin.	N/A	973-875-4832
Management:			
Bob Smith	VP of Safety	908-591-3938	973-702-8291
Mike Curry	President	N/A	973-875-4853
Emergency Services:		Emergency	Direct
Ambulance		911	973-875-6155
Fire		911	973-875-6155
Police		911	973-764-6155

# Administrative Information



To be completed  
by the senior guard  
and posted in the office.

# Lifeguard Schedule

Monday	Tuesday	Wednesday	Thursday	Friday	Saturday	Sunday
			B Shift 1 C Shift 2 D Shift 3 A OFF	1 A&D Shift 1 B Shift 2 C Shift 3	2 C&B Shift 1 D Shift 2 A Shift 3	3 D Shift 1 A Shift 2 C&B Shift 3
A Shift 1 B Shift 2 C Shift 3 D OFF	5 D Shift 4 A Shift 5 B Shift 3 C OFF	6 C Shift 1 D Shift 2 A Shift 3 B OFF	7 B Shift 1 C Shift 2 D Shift 3 A OFF	8 A&D Shift 1 B Shift 2 C Shift 3	9 C&B Shift 1 D Shift 2 A Shift 3	10 D Shift 1 A Shift 2 C&B Shift 3
A Shift 1 B Shift 2 C Shift 3 D OFF	12 D Shift 4 A Shift 5 B Shift 3 C OFF	13 C Shift 1 D Shift 2 A Shift 3 B OFF	14 B Shift 1 C Shift 2 D Shift 3 A OFF	15 A&D Shift 1 B Shift 2 C Shift 3	16 C&B Shift 1 D Shift 2 A Shift 3	17 D Shift 1 A Shift 2 C&B Shift 3
A Shift 1 B Shift 2 C Shift 3 D OFF	19 D Shift 4 A Shift 5 B Shift 3 C OFF	20 C Shift 1 D Shift 2 A Shift 3 B OFF	21 B Shift 1 C Shift 2 D Shift 3 A OFF	22 A&D Shift 1 B Shift 2 C Shift 3	23 C&B Shift 1 D Shift 2 A Shift 3	24 D Shift 1 A Shift 2 C&B Shift 3
A Shift 1 B Shift 2 C Shift 3 D OFF	26 D Shift 4 A Shift 5 B Shift 3 C OFF	27 C Shift 1 D Shift 2 A Shift 3 B OFF	28 B Shift 1 C Shift 2 D Shift 3 A OFF	29 A&D Shift 1 B Shift 2 C Shift 3	30 C&B Shift 1 D Shift 2 A Shift 3	31

Guard D

Guard C

Guard B

Guard A

	Hours	Lunch
Shift 1	10 AM - 5 PM	11:30-12:30
Shift 2	10:30 AM-5:30PM	12:30-1:30
Shift 3	11 AM-5:30PM	1:30 -2
Shift 4 **	10:30 AM-5:30PM	12:30-1:30
Shift 5	10AM - 5 PM	11:30-12:30

\*\* Shift 4 opens beach & towers prior to 10AM

## Lake Walkill Daily Bather Count 2008

To be completed daily  
by the senior guard or  
their delegate.

Note: The bather count is  
also important to the  
number and positioning  
of guards (See the Aquatic  
Supervision Plan) and  
should be checked  
periodically during the day.

Date	Day	Count		Date	Day	Count
24-Jun	Sat			1-Aug	Tue	
25-Jun	Sun			2-Aug	Wed	
26-Jun	Mon			3-Aug	Thu	
27-Jun	Tue			4-Aug	Fri	
28-Jun	Wed			5-Aug	Sat	
29-Jun	Thu			6-Aug	Sun	
30-Jun	Fri			7-Aug	Mon	
1-Jul	Sat			8-Aug	Tue	
2-Jul	Sun			9-Aug	Wed	
3-Jul	Mon			10-Aug	Thu	
4-Jul	Tue			11-Aug	Fri	
5-Jul	Wed			12-Aug	Sat	
6-Jul	Thu			13-Aug	Sun	
7-Jul	Fri			14-Aug	Mon	
8-Jul	Sat			15-Aug	Tue	
9-Jul	Sun			16-Aug	Wed	
10-Jul	Mon			17-Aug	Thu	
11-Jul	Tue			18-Aug	Fri	
12-Jul	Wed			19-Aug	Sat	
13-Jul	Thu			20-Aug	Sun	
14-Jul	Fri			21-Aug	Mon	
15-Jul	Sat			22-Aug	Tue	
16-Jul	Sun			23-Aug	Wed	
17-Jul	Mon			24-Aug	Thu	
18-Jul	Tue			25-Aug	Fri	
19-Jul	Wed			26-Aug	Sat	
20-Jul	Thu			27-Aug	Sun	
21-Jul	Fri			28-Aug	Mon	
22-Jul	Sat			29-Aug	Tue	
23-Jul	Sun			30-Aug	Wed	
24-Jul	Mon			31-Aug	Thu	
25-Jul	Tue			1-Sep	Fri	
26-Jul	Wed			2-Sep	Sat	
27-Jul	Thu			3-Sep	Sun	
28-Jul	Fri			4-Sep	Mon	
29-Jul	Sat					
30-Jul	Sun					
31-Jul	Mon					

Lake Walkill  
 2008  
 Lifeguard Roster

Name	Position	Life Saving	CPR	Water Front	Working Papers
	Senior Guard	Yes	Yes	Yes	Yes
	Senior Guard	Yes	Yes	Yes	Yes
	Guard	Yes	Yes	Yes	Yes
	Guard	Yes	Yes	Yes	Yes
	Guard	Yes	Yes	Yes	Yes
	Guard	Yes	Yes	Yes	Yes

# Lake Wallkill Recreation Equipment Inspection Log

Year: 2008

To be completed daily  
by the senior guard or  
their delegate.

Note: the inspection of  
equipment is an important  
preventive to avoid injuries.  
Any issues with the equipment  
should be immediately reported  
to the Lake Manager and efforts  
made to prevent people from  
using a faulty piece of equipment.

Week	30-Jun	7-Jul	14-Jul	21-Jul	28-Jul	4-Aug	11-Aug	18-Aug	25-Aug	1-Sep	8-Sep
Swings											
Slide											
See-Saw											
Monkey Bars											
Spring Rides											
Spin Ride											
Date											
Inspector											

SAMPLE

To be completed by the Lake manager at the beginning of the season.

Note: Guards should be aware that these activities are performed so they can Respond appropriately if questioned by the Vernon Health Inspector.

Date Completed	Pre Operational Assessment Task
<input type="text"/>	Beach Re-Grading
<input type="text"/>	General Hazards Inspection & Removal (Rocks, stumps, glass, etc...)
<input type="text"/>	Slide Exit Water Depth (3 Feet) and no hazards
<input type="text"/>	Diving Tower Water Depth (12 Feet extending 12 Feet beyond end of board) and no hazards
<input type="text"/>	Raft water depth (8 Feet extending 12 Feet beyond platform) and no hazards

The above items were completed in accordance with the Lake Walkkill Pre-Operational assessment of the beach and bathing areas.

---

Brendan Jaeger , Manager - Lake Walkkill