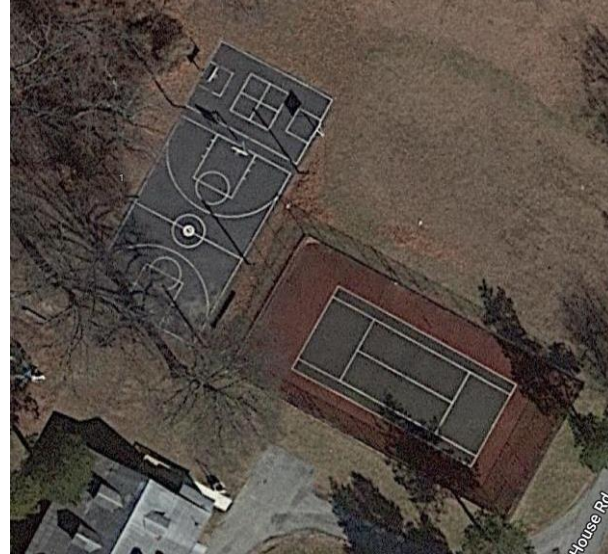


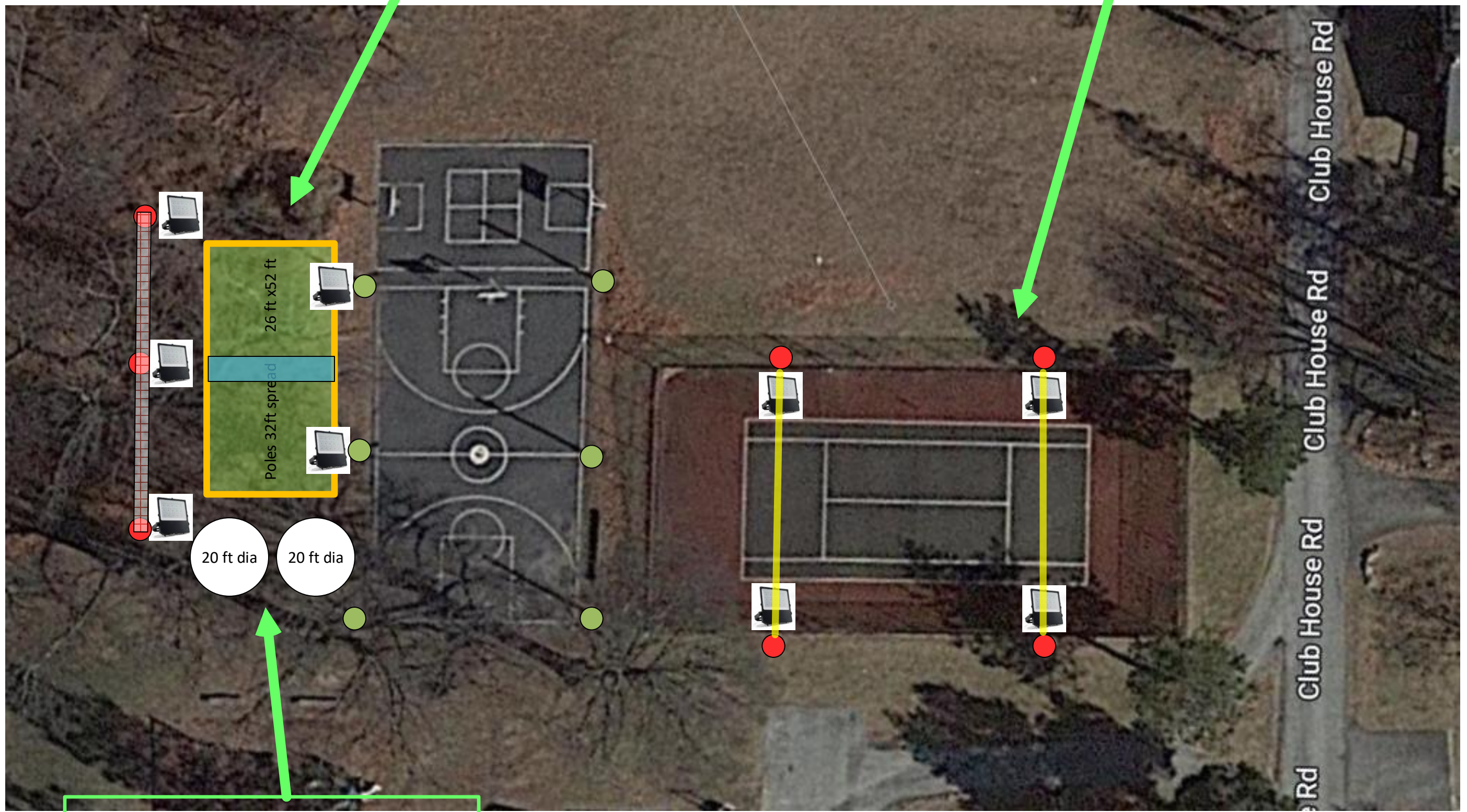
# LWK FIELD

## Tetherball, Volleyball and Lighting

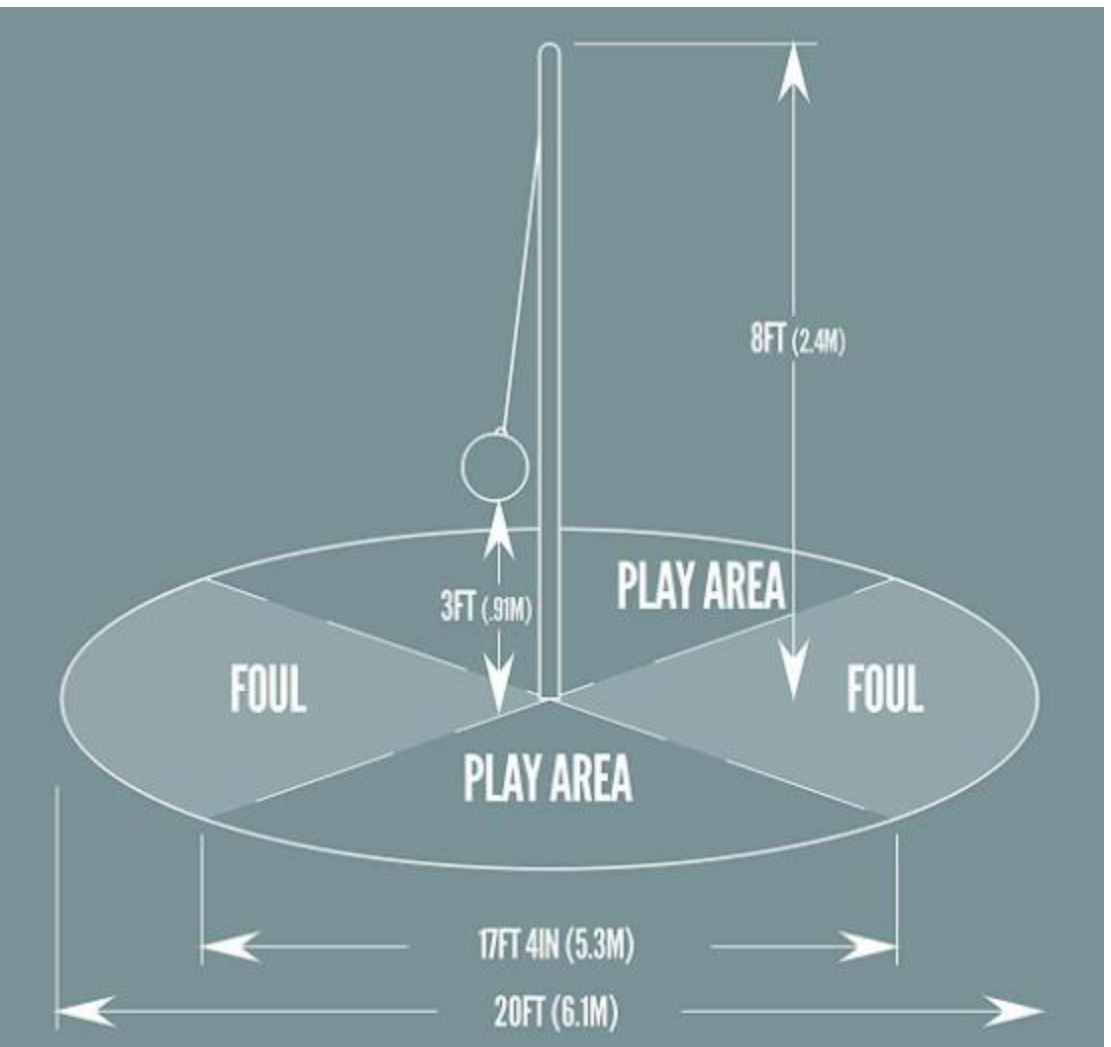


PROPOSED VOLLEYBALL FIELD INCLUDING LIGHTS/NETTING

PROPOSED LIGHTS FOR TENNIS/PICKLE BALL



PROPOSED TETHERBALL AREA (2)



Trencher \$155 day, Warwick rental

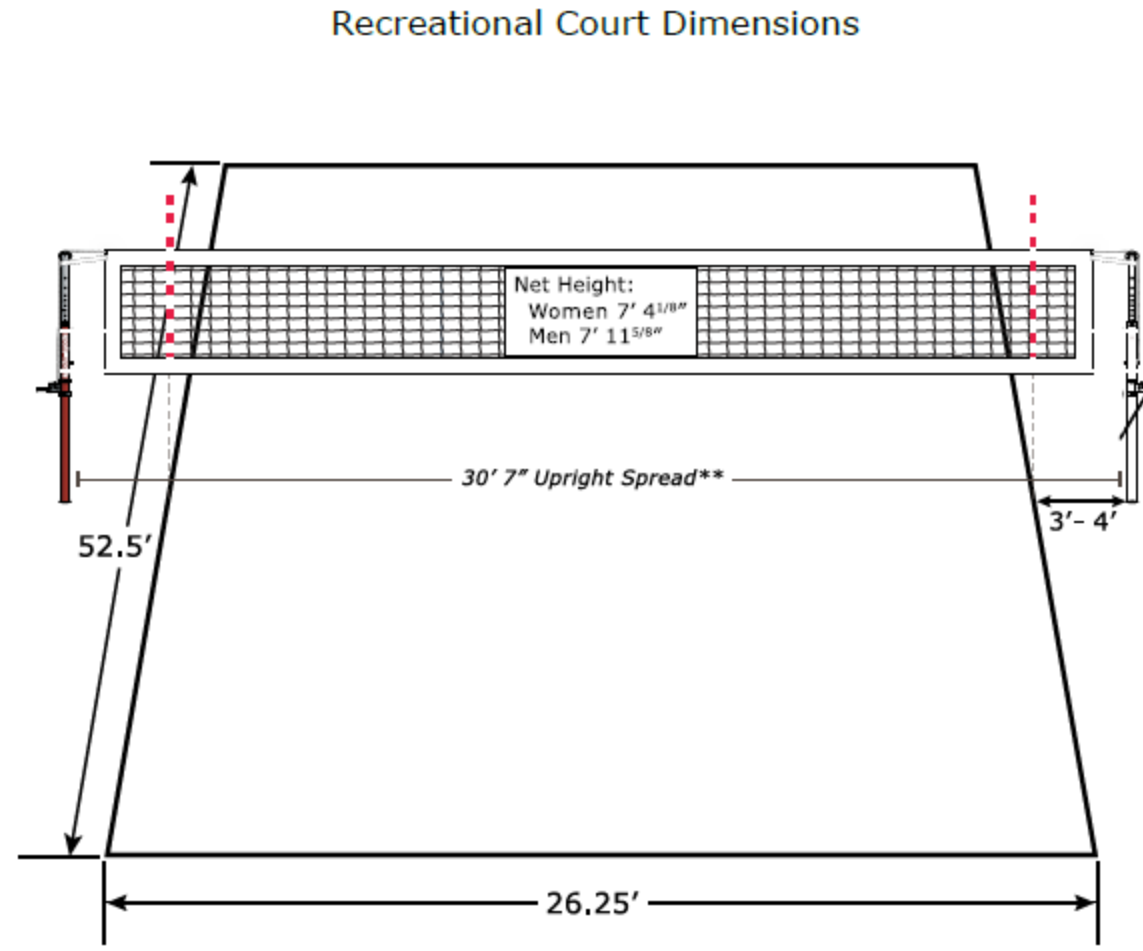


3in x 10 foot EMT pole (2)  
 = \$200

(6) 20 foot telephone poles \$280x4 = \$1, 680



\$140  
 9 lights at \$250 each = \$2, 250



Court Measurements are to the outside of the lines

\* Posts should be placed 3' to 4' from each side line, 30' 7" from each other. Adjacent courts built side-by-side are recommended to have a free space of 16' to 20' and may share free space. If adjacent courts are situated end line to end line, 29' 6" of free space is recommended.

250 feet direct burial = \$150



\$20x2 = \$40  
 Tachikara SSTB Soft Tetherball

<https://www.amazon.com/dp/B07XKCK6HY?tag=sc-fitness-20&linkCode=ogi&th=1&psc=1>

Net World Sports Competition Volleyball Nets | FIVB Regulation Volleyball Nets for Tournaments



Park & Sun Sports Outdoor Volleyball Net Accessory: Heavy-Duty Net Tensioning Lever Ratchet, Blue, One Size \$28

[https://www.networldsports.com/heavy-duty-cricket-netting-10ft-2mm.html?gclid=CjwKCAjwqJ5aBhBUEiwAg5W9pyzocQZ52Cc8NW4\\_8j5IZHXRv6TVzmDz8JWOuKANuOm\\_c9IRR5jlqixocZvsQAvD\\_BwE](https://www.networldsports.com/heavy-duty-cricket-netting-10ft-2mm.html?gclid=CjwKCAjwqJ5aBhBUEiwAg5W9pyzocQZ52Cc8NW4_8j5IZHXRv6TVzmDz8JWOuKANuOm_c9IRR5jlqixocZvsQAvD_BwE)

Area Shape: Rectangle  
 Depth = 7 in  
 Length = 52 ft  
 Width = 26 ft  
 Quantity = 1  
 Optional Cost Calculation: price per cubic yard (yd³)  
 \$ 0  
 Answer: Cubic Yards = 29.21 yd³

NO SCALE  
 VEVOR 13 ft. x 108 ft. Commercial Grade Driveway Fabric Weed Barrier Landscape Fabric for Walking Path  
 \$134.00 /box  
 Pay \$109.00 after \$25 OFF your total qualifying purchase upon opening a new card. Apply for a Home Depot Consumer Card



\$24  
 Tandem Sport Covered Volleyball Net Tightener

## COST

**Lights/poles/netting**

qty	price each	total	description
9	\$250	\$2,250.00	LED lights
6	\$280	\$1,680.00	20 foot telephone poles
2	\$150	\$300.00	1/2 wire 250 feet
9	\$50	\$450.00	light/wire mounting hardware
24	\$15	\$360.00	3 days to install
1	\$500	\$500.00	electrician (my guess)
90	\$5	\$463.50	14' tall 2.5mm, 90 foot netting
1	\$100	\$100.00	hardware to install netting to poles
1	\$200	\$200.00	Trencher rental for the day
		<b>\$6,303.50</b>	<b>Total cost</b>

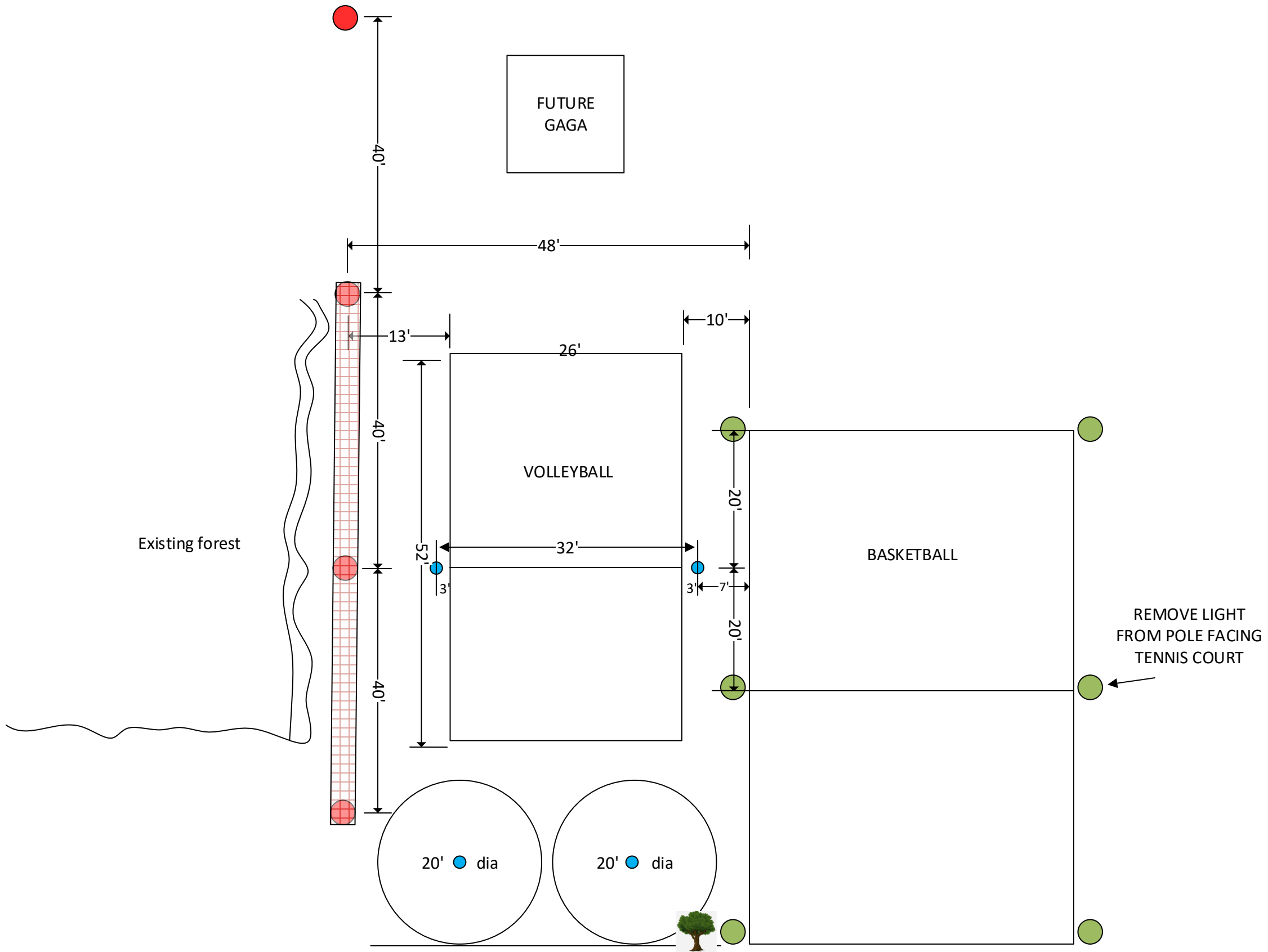
**tetherball**

qty	price each	total	description
2	\$125	\$250.00	3 in x 10 ft metal conduit pipe
2	\$20	\$40.00	tetherballs
4	\$10	\$40.00	bags of cement
2	\$20	\$40.00	hardware for top of pole
8	\$15	\$120.00	1 day to install
		<b>\$490.00</b>	<b>total cost</b>

**volleyball**

qty	price each	total	description
1	\$150.00	\$150.00	net 28 foot
4	\$10	\$40.00	bags of cement
1	\$1,500.00	\$1,500.00	30 yards of sand (7in x 26ft x 52ft)
2	\$125.00	\$250.00	3 in x 10 ft metal conduit pipe
1	\$28.00	\$28.00	net tensioner (top)
1	\$24.00	\$24.00	net tensioner (bottom)
2	\$20.00	\$40.00	volleyball
1	\$150.00	\$150.00	weed fabric 13' x 108'
1	\$100.00	\$100.00	misc hardware to attach to poles
16	\$15.00	\$240.00	2 days to install
		<b>\$2,522.00</b>	<b>total cost</b>

**\$9,315.50 total total cost**



REMOVE LIGHT FROM POLE FACING TENNIS COURT

MEASUREMENTS FROM EDGE OF BLACKTOP